



AFRICA
HDPE
FABRICATION & FITTINGS

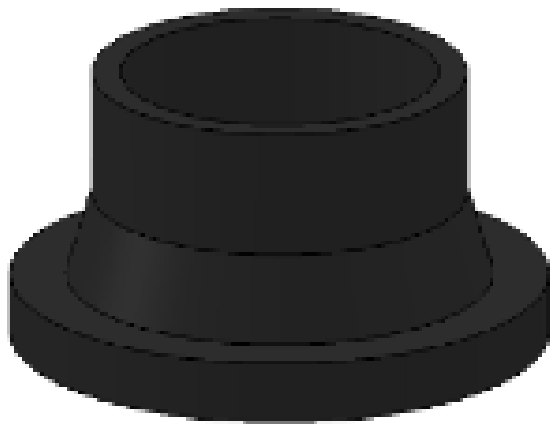
HDPE STUBS

Africa HDPE is a leading provider of HDPE products for a variety of applications. Our HDPE products are made from high-density polyethylene and are highly durable and resistant to wear and tear chemicals, and extreme temperatures. Africa HDPE specializes in the fabrication of custom HDPE products and supplies a wide range of HDPE fittings.

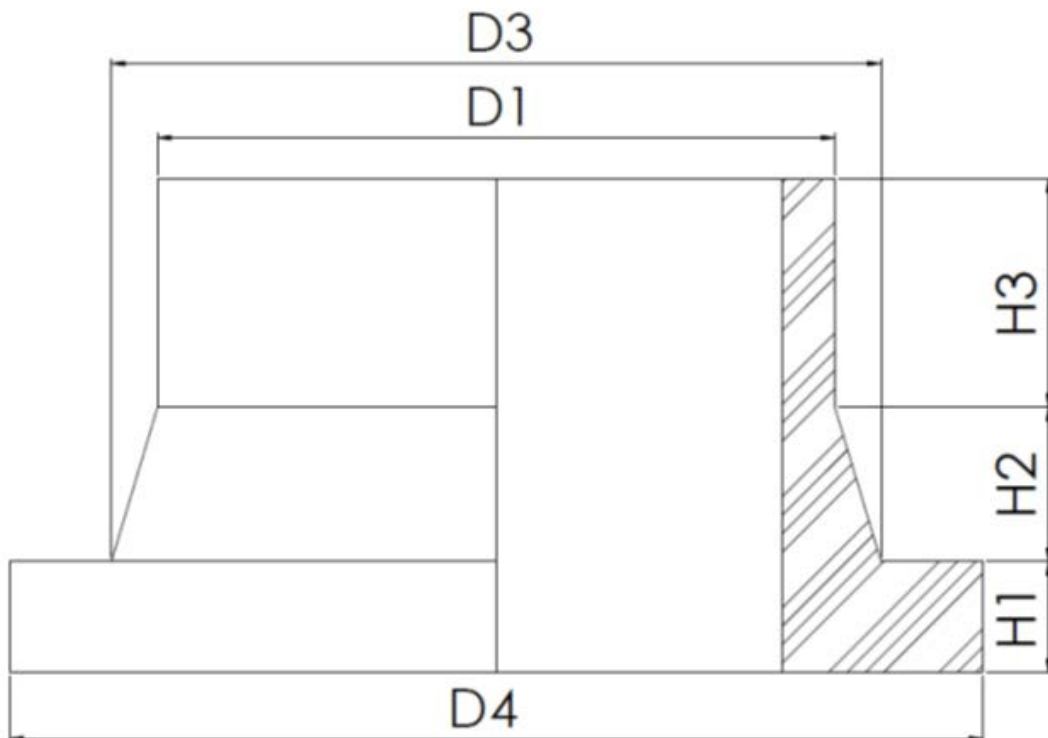
We strive to provide our customers with the highest quality HDPE products available, at a competitive price along with excellent customer service.

Contact us today to learn more about our products and services.

HDPE STUBS

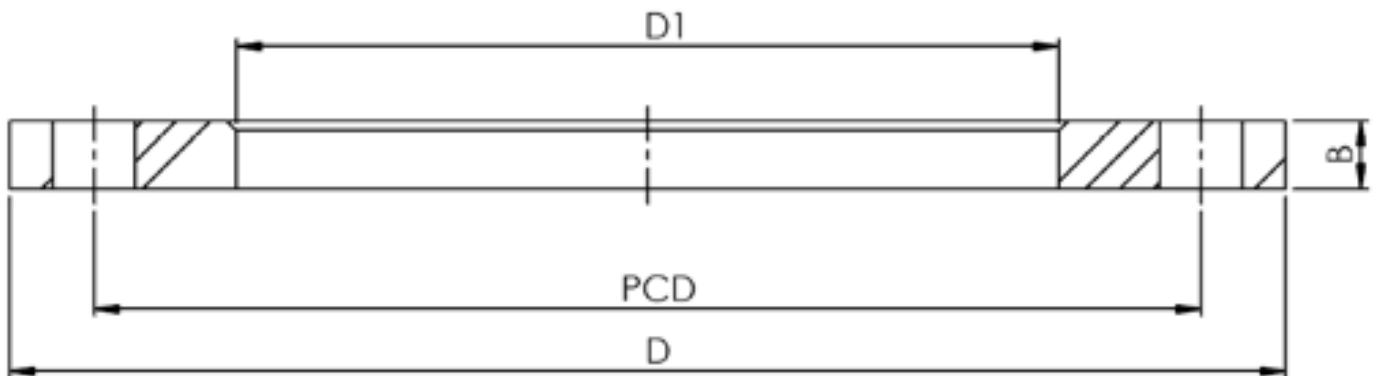
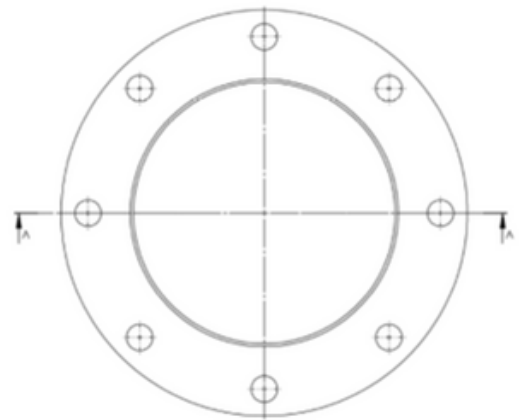
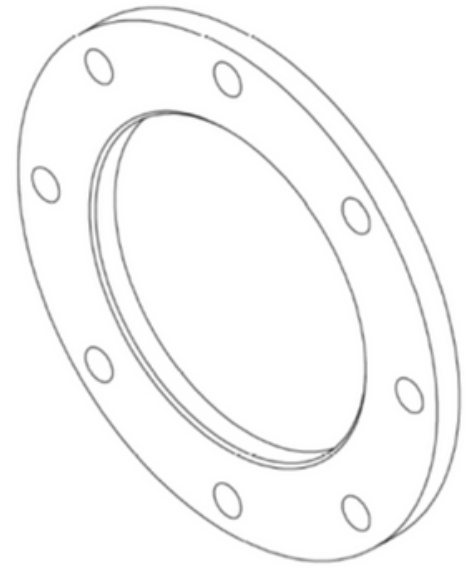


| Pipe OD | D3 | D4 | h1 | h2 | h3 | z1 | D |
|---------|-----|-----|----|----|----|-----|-----|
| 20 | 27 | 45 | 7 | 13 | 30 | 50 | 95 |
| 25 | 33 | 56 | 9 | 13 | 28 | 50 | 105 |
| 32 | 40 | 65 | 10 | 13 | 27 | 50 | 115 |
| 40 | 50 | 73 | 11 | 15 | 24 | 50 | 140 |
| 50 | 61 | 82 | 12 | 15 | 23 | 50 | 50 |
| 63 | 75 | 98 | 14 | 20 | 16 | 50 | 165 |
| 75 | 89 | 110 | 16 | 20 | 14 | 50 | 185 |
| 90 | 105 | 129 | 17 | 20 | 43 | 80 | 200 |
| 110 | 125 | 158 | 18 | 25 | 37 | 80 | 220 |
| 125 | 132 | 158 | 25 | 20 | 35 | 80 | 220 |
| 140 | 155 | 188 | 25 | 28 | 27 | 80 | 250 |
| 160 | 175 | 212 | 25 | 28 | 27 | 80 | 285 |
| 180 | 180 | 212 | 30 | 30 | 20 | 80 | 285 |
| 200 | 232 | 268 | 32 | 40 | 28 | 100 | 340 |
| 225 | 235 | 268 | 32 | 30 | 38 | 100 | 340 |
| 250 | 285 | 320 | 35 | 40 | 25 | 100 | 395 |
| 280 | 291 | 320 | 35 | 30 | 35 | 100 | 395 |
| 315 | 335 | 370 | 35 | 40 | 25 | 100 | 445 |
| 355 | 373 | 430 | 40 | 40 | 40 | 120 | 505 |
| 400 | 427 | 482 | 46 | 45 | 29 | 120 | 565 |
| 450 | 514 | 540 | 60 | 60 | 10 | 120 | 670 |
| 500 | 530 | 585 | 60 | 50 | 10 | 120 | 670 |
| 560 | 615 | 645 | 60 | 60 | 10 | 120 | 780 |
| 630 | 642 | 685 | 60 | 40 | 20 | 120 | 780 |



| OD | Bolts | | Length of Bolts | | | |
|-----|---------|---------|--------------------|---------|------------------|---------|
| | No Size | Size | Plastic to Plastic | | Plastic to Steel | |
| | | | PN | PN | PN | PN |
| | | | 4 - 10 | 12 - 20 | 4 - 10 | 12 - 20 |
| 20 | 4 | M12 | 65 | 65 | 50 | 50 |
| 25 | 4 | M12 | 65 | 65 | 50 | 50 |
| 32 | 4 | M12 | 65 | 65 | 50 | 50 |
| 40 | 4 | M16 | 80 | 90 | 60 | 70 |
| 50 | 4 | M16 | 80 | 90 | 60 | 70 |
| 63 | 4 | M16 | 90 | 90 | 65 | 80 |
| 75 | 4 | M16 | 90 | 90 | 65 | 80 |
| 90 | 8 | M16 | 90 | 100 | 65 | 80 |
| 110 | 8 | M16 | 100 | 120 | 70 | 90 |
| 125 | 8 | M16 | 120 | 120 | 80 | 90 |
| 140 | 8 | M16 | 120 | 120 | 90 | 90 |
| 160 | 8 | M20 | 130 | 170 | 90 | 120 |
| 180 | 8 | M20 | 140 | 170 | 100 | 120 |
| 200 | 8/12* | M20 | 140 | 170 | 100 | 120 |
| 225 | 8/12* | M20 | 150 | 170 | 120 | 120 |
| 250 | 12 | M20 | 160 | 220 | 120 | 150 |
| 280 | 12 | M20 | 160 | 220 | 120 | 150 |
| 315 | 12 | M20 | 190 | 230 | 120 | 160 |
| 355 | 12/16* | M20/24* | 190 | 230 | 130 | 160 |
| 400 | 16 | M24 | 210 | 240 | 140 | 170 |
| 450 | 20 | M24 | 240 | 250 | 150 | 180 |
| 500 | 20 | M24/30* | 240 | - | 150 | - |
| 560 | 20 | M24/30* | 240 | - | 170 | - |
| 630 | 20 | M24/30* | 260 | - | 180 | - |

*Flange drilled to SANS 1123:2007 Table 1000 and 1600

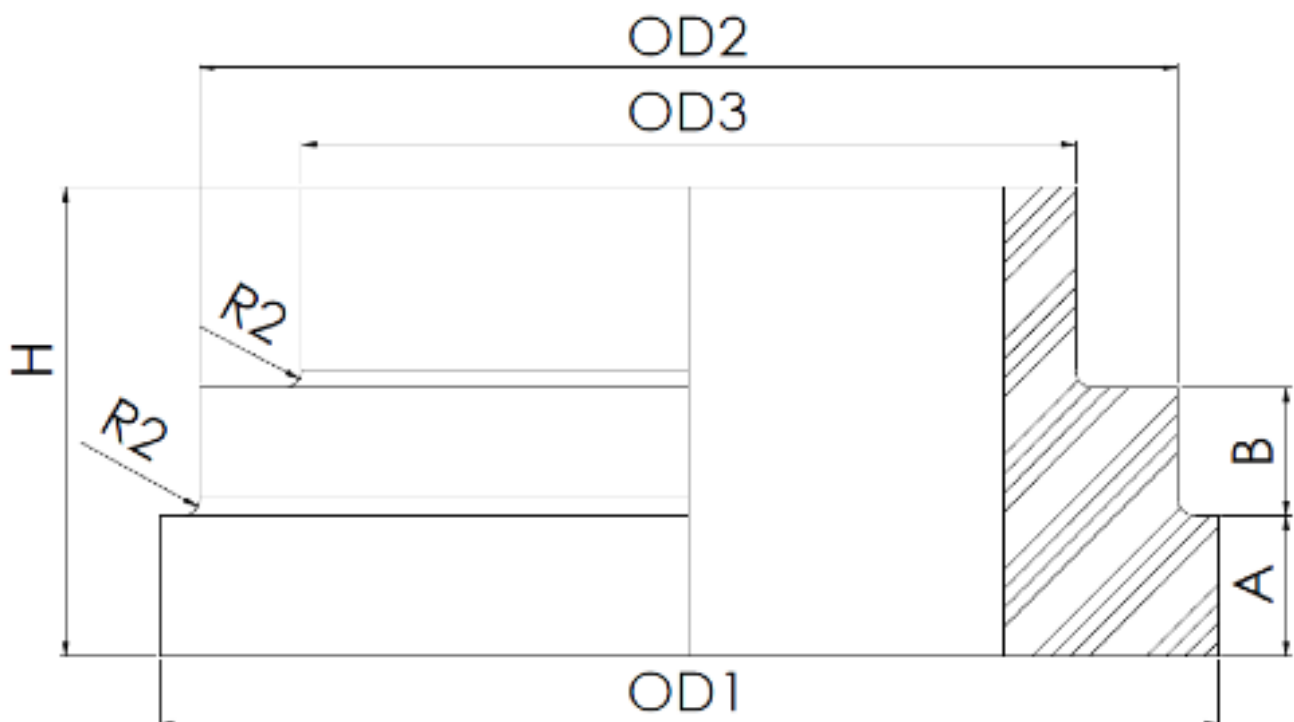


Victaulic Clamp Fittings

Victaulic fittings are used with Victaulic stubs to establish detachable joints in HDPE pressure pipe systems. Stubs may be butt welded to pipe or spigot ends on butt weld fittings. Victaulic clamps enable detachable joints to be made with pipes that have Victaulic stubs butt welded to them.

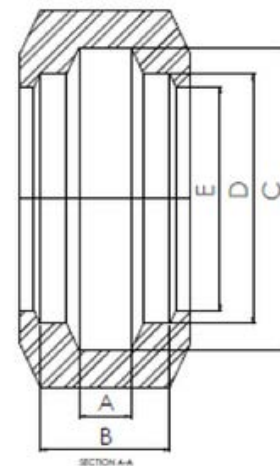
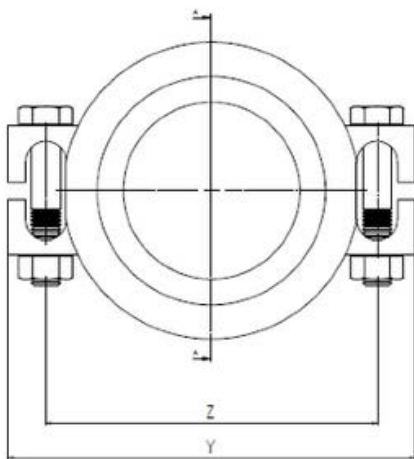
Victaulic Stub details:

| Pipe OD | Victaulic size | OD1 | OD2 | OD3 | A | B | H | Clamp size |
|---------|----------------|-------|-----|-------|------|----|----|------------|
| 50 | 63 | 68.5 | 60 | 50.5 | 16 | 10 | 55 | 2" |
| 63 | 90 | 97 | 90 | 61 | 16 | 15 | 55 | 3" |
| 75 | 90 | 97 | 90 | 76 | 16 | 15 | 55 | 3" |
| 90 | 110 | 124.5 | 115 | 91 | 16.5 | 15 | 55 | 4" |
| 110 | 110 | 124.5 | 115 | 111 | 16.5 | 15 | 55 | 4" |
| 125 | 160 | 178.5 | 161 | 126 | 17 | 15 | 55 | 6" |
| 140 | 160 | 178.5 | 161 | 141 | 17 | 15 | 55 | 6" |
| 160 | 160 | 178.5 | 161 | 161 | 17 | 15 | 55 | 6" |
| 180 | 225 | 231.5 | 218 | 181 | 21 | 21 | 85 | 8" |
| 200 | 225 | 231.5 | 218 | 201.5 | 21 | 21 | 85 | 8" |
| 225 | 250 | 286 | 273 | 226.5 | 21 | 21 | 85 | 10" |
| 250 | 250 | 286 | 273 | 251.5 | 21 | 21 | 85 | 10" |



Victaulic Clamp details:

| Nominal Size | A | B | C | D | E | X | Y | Z | Bolt Size |
|--------------|------|------|-------|------|------|------|------|------|-----------|
| (mm) | (mm) | (mm) | (mm) | (mm) | (mm) | (mm) | (mm) | (mm) | |
| 50 | 25 | 35 | 82.5 | 68 | 61 | 44.5 | 146 | 113 | M12 |
| 80 | 25 | 35 | 110 | 96 | 90.5 | 63.5 | 186 | 146 | M16 |
| 100 | 27 | 38 | 141.5 | 123 | 116 | 63.5 | 232 | 184 | M16 |
| 150 | 27 | 38 | 194 | 176 | 167 | 89 | 279 | 232 | M16 |
| 200 | 30 | 44 | 255.5 | 233 | 221 | 111 | 356 | 308 | M20 |
| 250 | 30 | 44 | 314.5 | 287 | 275 | 111 | 410 | 365 | M20 |

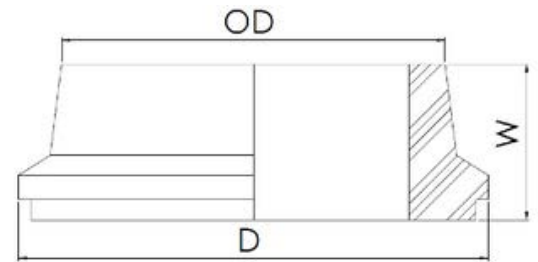


Tak Clamp Fittings

Tak fittings are used with tak stubs to establish detachable joints in HDPE pressure pipe systems. Stubs may be butt welded to pipe or spigot ends on butt weld fittings. Tak clamps enable detachable joints to be made with pipes that have Tak stubs butt welded to them.

Tak stubs detail

| Pipe OD | D | Type L <400kPa W (mm) | Type L <1600kPa W (mm) |
|---------|-----|-----------------------|------------------------|
| 110 | 142 | - | 53 |
| 125 | 167 | - | 55 |
| 140 | 175 | - | 60 |
| 160 | 196 | 52.5 | 65 |
| 180 | 224 | 65 | 65 |
| 200 | 246 | - | 68 |
| 225 | 272 | - | 74 |
| 250 | 297 | 78 | 75 |
| 280 | 326 | - | 78 |



| Pipe | A | B | C |
|------|------|------|------|
| OD | (mm) | (mm) | (mm) |
| 110 | 165 | 212 | 86 |
| 125 | 186 | 237 | 80 |
| 140 | 198 | 245 | 95 |
| 160 | 215 | 272 | 104 |
| 180 | 246 | 300 | 105 |
| 200 | 278 | 322 | 111 |
| 225 | 293 | 348 | 108 |
| 250 | 322 | 373 | 118 |
| 280 | 354 | 402 | 122 |

Tak Clamp detail

